

# task\_yp4rbdlj8kktyrhp\_with\_calculation

## Student Group

First Name	Surname	Matrikel Nr.

## Table of Contents

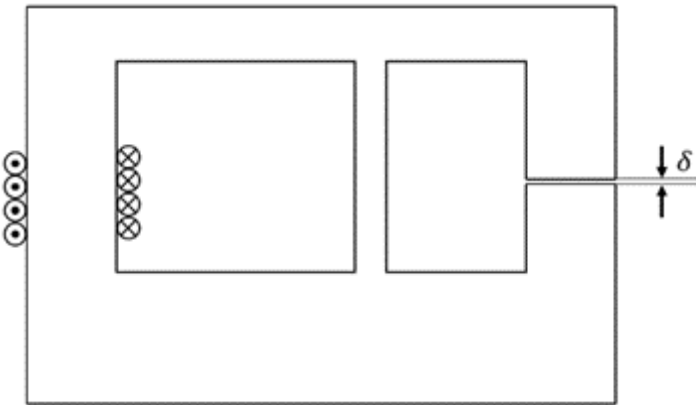
Exercise E1 Magnetic Circuit (written test, approx. 7 % of a 120-minute written test, SS2022)	2
---	---

magnetic circuit, exam ee2 SS2022

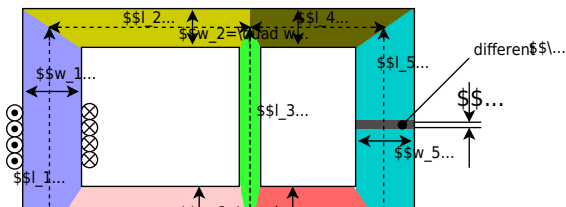
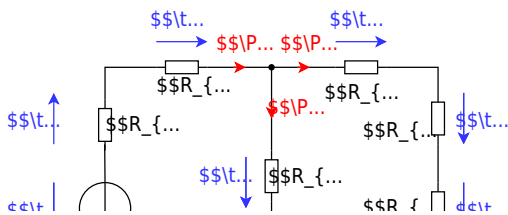
**Exercise E1 Magnetic Circuit**  
**(written test, approx. 7 % of a 120-minute written test, SS2022)**

The magnetic setup below shall be given. Draw the equivalent magnetic circuit to fully represent the setup. Name all the necessary magnetic resistances, fluxes, and voltages. The components shall be designed in such a way, that the magnetic resistance is constant in it.

Formulas are not necessary.



Path



From:

<https://first.mexle.te.hs-heilbronn.de/> - **MEXLE Wiki**

Permanent link:

[https://first.mexle.te.hs-heilbronn.de/ee2/task\\_yp4rbdlj8kktyrhp\\_with\\_calculation?rev=1720319184](https://first.mexle.te.hs-heilbronn.de/ee2/task_yp4rbdlj8kktyrhp_with_calculation?rev=1720319184)

Last update: **2024/07/07 04:26**

