

Exam Winter Semester 2022

Student Group

First Name	Surname	Matrikel Nr.

Table of Contents

- Exercise E5 Equivalent linear Source (written test, approx. 14 % of a 60-minute written test, WS2022) 3
- Exercise E2 Temperature-dependent Resistance (written test, approx. 6 % of a 60-minute written test, WS2022) 6
- Exercise E9 Analyzing complex Impedances (written test, approx. 14 % of a 60-minute written test, WS2022) 7
- Exercise E13 Complex Impedance Circuit (written test, approx. 15 % of a 60-minute written test, WS2022) 7
- Exercise E11 Impedances at different Frequencies (written test, approx. 18 % of a 60-minute written test, WS2022) 10
- Exercise E1 Resistance of a Wire by Resistivity (written test, approx. 6 % of a 60-minute written test, WS2022) 10
- Exercise E7 Charging Capacitors (written test, approx. 16 % of a 60-minute written test, WS2022) 11
- Exercise E3 Pure Resistor Network Simplification (written test, approx. 13 % of a 60-minute written test, WS2022) 12
- Exercise E6 Equivalent linear Source (written test, approx. 14 % of a 60-minute written test, WS2022) 14
- Exercise E2 Temperature-dependent Resistance (written test, approx. 6 % of a 60-minute written test, WS2022) 18
- Exercise E10 Analyzing complex Impedances (written test, approx. 14 % of a 60-minute written test, WS2022) 19
- Exercise E14 Complex Impedance Circuit (written test, approx. 15 % of a 60-minute written test, WS2022) 19
- Exercise E12 Impedances at different Frequencies (written test, approx. 18 % of a 60-minute written test, WS2022) 22
- Exercise E1 Resistance of a Wire by Resistivity (written test, approx. 6 % of a 60-minute written test, WS2022) 22
- Exercise E8 Charging Capacitors (written test, approx. 16 % of a 60-minute written test,

WS2022) 23
Exercise E4 Pure Resistor Network Simplification (written test, approx. 13 % of a 60-minute
written test, WS2022) 24

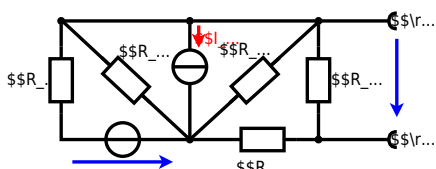
1

**Exercise E5 Equivalent linear Source
(written test, approx. 14 % of a 60-minute written test, WS2022)**

The circuit in the following has to be simplified.
Result

$$U_{\text{rs}} = U_{\text{AB}} = 4.5 \text{ V}$$

$$R_{\text{i}} = R_{\text{AB}} = 6 \text{ } \Omega$$



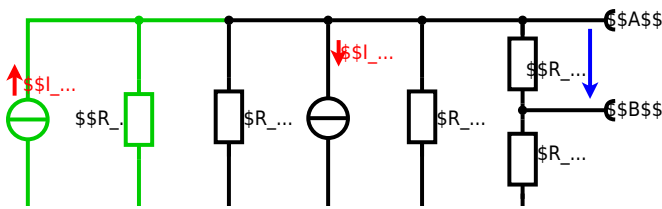
Calculated the internal resistance R_{i} and the source voltage U_{rs} of an equivalent linear voltage source on the connectors A and B .
$$R_1=5.0 \text{ } \Omega, \quad U_2=6.0 \text{ V}, \quad R_3= 10 \text{ } \Omega, \quad I_4=4.2 \text{ A}, \quad R_5=10 \text{ } \Omega, \quad R_6=7.5 \text{ } \Omega, \quad R_7=15 \text{ } \Omega$$
 Use equivalent sources in order to simplify the circuit!

Solution

The best thing is to re-think the wiring like rubber bands and adjust them:



The linear voltage source of U_2 and R_1 can be transformed into a current source $I_2 = \frac{U_2}{R_1}$ and R_1 :



Now a lot of them can be combined. The resistors R_1 , R_3 , R_5 are in parallel, like also I_2 and I_4 :

$$R_{135} = R_1 || R_3 || R_5$$

$$I_{24} = I_2 - I_4$$

The resulting circuit can again be transformed:



Here, the U_{24} is calculated by I_{24} as the following:

$$U_{24} = I_{24} \cdot R_{357}$$

$$U_{AB} = U_{24} \cdot \left(\frac{R_7}{R_6 + R_7 + R_1 || R_3 || R_5} \right) - I_4 \cdot R_1 || R_3 || R_5$$

On the right side of the last circuit, there is a voltage divider given by R_{135} , R_6 , and R_7 .

Therefore the voltage between A and B is given as:

$$U_{AB} = U_{24} \cdot \left(\frac{R_7}{R_6 + R_7 + R_1 || R_3 || R_5} \right) - \left(\frac{U_2}{R_1} - I_4 \right) \cdot R_1 || R_3 || R_5$$

For the internal resistance R_i the ideal voltage source is substituted by its resistance ($=0 \Omega$, so a short-circuit):

$$R_{AB} = R_7 || (R_6 + R_1 || R_3 || R_5)$$

with $R_1 || R_3 || R_5 = 5 \Omega || 10 \Omega || 10 \Omega = 5 \Omega || 5 \Omega = 2.5 \Omega$:

$$U_{AB} = \left(\frac{6.0 \text{ V}}{5.0 \Omega} \right) - 4.2 \Omega \cdot \left(\frac{15 \Omega \cdot 2.5 \Omega}{7.5 \Omega + 15 \Omega + 2.5 \Omega} \right)$$

$$R_{AB} = 15 \Omega || (7.5 \Omega + 2.5 \Omega)$$

Exercise E2 Temperature-dependent Resistance (written test, approx. 6 % of a 60-minute written test, WS2022)

2. The diagram explains the effect of resistance on the refrigeration system. The circuit has a resistance of 10Ω at 25°C and 25Ω at 0°C . Your answer.

Its temperature coefficients are: $\alpha = 0.01 \text{ K}^{-1}$ and $\beta = 71 \cdot 10^{-6} \text{ K}^{-2}$

Result
The temperature inside the refrigeration system can reach down to -40°C .

$$R_{25} = 10 \Omega$$

The power of the resistor $P = U \cdot I$ and $I = \frac{U}{R}$. Therefore, a solution is to heat up the refrigeration system.

Therefore, with constant U and increasing R the power decreases. Ten times more resistance decreases the heat flow to one-tenth.

$$R = R_0 \cdot (1 + \alpha \cdot \Delta T + \beta \cdot \Delta T^2)$$

$$\text{with } \Delta T = T_{\text{end}} - T_{\text{start}}$$

$$R = 10 \Omega \cdot \left(1 + 0.01 \text{ K}^{-1} \cdot (-40^\circ \text{C} - 25^\circ \text{C}) + 71 \cdot 10^{-6} \text{ K}^{-2} \cdot (-40^\circ \text{C} - 25^\circ \text{C})^2 \right)$$

Exercise E9 Analyzing complex Impedances
 (written test, approx. 14 % of a 60-minute written test, WS2022)

2. Calculate the complex power \underline{S} and the real power P in the circuit shown through the components. \underline{U} and \underline{X}_L shall be given.

After analysis, the full bridge circuit can be simplified to a series circuit with a voltage source \underline{U} and a load impedance \underline{Z} . The load impedance is $\underline{Z} = (2 + j4) \parallel (3 - j4) + 5j$.

Solution
 .. Calculate the physical values of the load components.
 Solution $R = 2 \Omega$, $X_L = 4 \Omega$, $X_C = -4 \Omega$, $X_L = 5 \Omega$

Solution

$$\underline{I} = \frac{\underline{U}}{\underline{Z}} = \frac{50 \angle 0^\circ}{(2 + j4) \parallel (3 - j4) + 5j} = \frac{50 \angle 0^\circ}{(2 + j4) \cdot (3 - j4) / (2 + j4 + 3 - j4) + 5j} = \frac{50 \angle 0^\circ}{(6 - j8 + j12 - 16) / (5 + j0) + 5j} = \frac{50 \angle 0^\circ}{(-10 + j4) / 5 + 5j} = \frac{50 \angle 0^\circ}{-2 + j0.8 + 5j} = \frac{50 \angle 0^\circ}{-2 + j5.8}$$
 The voltage across the load is $\underline{U}_L = \underline{I} \cdot \underline{Z} = \frac{50 \angle 0^\circ}{-2 + j5.8} \cdot (-10 + j4) = \frac{50 \angle 0^\circ}{-2 + j5.8} \cdot (-10 + j4)$
 The real power is $P = \text{Re}\{\underline{S}\} = \text{Re}\{\underline{I} \cdot \underline{U}\} = \text{Re}\left\{\frac{50 \angle 0^\circ}{-2 + j5.8} \cdot 50 \angle 0^\circ\right\} = \frac{50^2}{2} = 1250 \text{ W}$
 The complex power is $\underline{S} = \underline{I} \cdot \underline{U} = \frac{50 \angle 0^\circ}{-2 + j5.8} \cdot 50 \angle 0^\circ = \frac{2500}{-2 + j5.8} = 1250 - j437.5 \text{ VA}$

Exercise E13 Complex Impedance Circuit
 (written test, approx. 15 % of a 60-minute written test, WS2022)

2. Calculate the current \underline{I} in the circuit shown. The voltage source is $u(t) = 3.0 \sin(2\pi \cdot 15 \cdot t) \text{ V}$. The circuit consists of a voltage source $u(t) = 3.0 \sin(2\pi \cdot 15 \cdot t) \text{ V}$, a resistor $R = 1 \text{ k}\Omega$, an inductor $L = 330 \mu\text{H}$, and a capacitor $C = 0.22 \mu\text{F}$, all in series.

Solution
 Result $\underline{I} = 19.73 \angle -48.2^\circ \text{ mA}$

.. Draw the circuit diagram of the given circuit and label all components, voltages, and currents.

$$\underline{Z} = R + j\omega L - j\omega C = 1000 + j2\pi \cdot 15 \cdot 330 \cdot 10^{-6} - j2\pi \cdot 15 \cdot 0.22 \cdot 10^{-6} = 1000 + j19.8 - j1.98 = 998 + j17.8 \Omega$$

$$\underline{I} = \frac{\underline{U}}{\underline{Z}} = \frac{3 \angle 0^\circ}{998 + j17.8} = 3 \angle 0^\circ \cdot \frac{1}{998 + j17.8} = 3 \angle 0^\circ \cdot \frac{1}{\sqrt{998^2 + 17.8^2}} \angle -\arctan\left(\frac{17.8}{998}\right) = 19.73 \angle -48.2^\circ \text{ mA}$$



Exercise E11 Impedances at different Frequencies
(written test, approx. 18 % of a 60-minute written test, WS2022)

Question: In a series circuit, a resistor with $R_1 = 1.00 \text{ k}\Omega$ and a capacitor with $C_1 = 40 \text{ nF}$ are connected in series. The voltage across the resistor is $U_{R_1} = 100 \text{ V}$ at a frequency of $f = 4 \text{ MHz}$. Calculate the absolute value of the impedance of the capacitor Z_C and the total impedance Z_{total} of the circuit.

Solution:

$$Z_C = \frac{1}{j\omega C_1} = \frac{1}{j \cdot 2\pi \cdot 4 \cdot 10^6 \cdot 40 \cdot 10^{-9}} = -j10 \text{ }\Omega$$

$$Z_{\text{total}} = R_1 + Z_C = 1.00 \text{ k}\Omega - j10 \text{ }\Omega$$

A series circuit means that the current is constant on every component. The equivalent impedance for R_1 and Z_C combined is given by $Z_{\text{total}} = R_1 + Z_C$. Parallel circuit means that the voltage is the same on R_1 and Z_C . $U_{R_1} = U_{Z_C} = 100 \text{ V}$. Since Z_C is perpendicular to R_1 , the resulting current of the parallel circuit is given as:

$$I_{\text{total}} = \sqrt{I_{R_1}^2 + I_{Z_C}^2} = \sqrt{\left(\frac{U_{R_1}}{R_1}\right)^2 + \left(\frac{U_{Z_C}}{|Z_C|}\right)^2} = \sqrt{\left(\frac{100}{1000}\right)^2 + \left(\frac{100}{10}\right)^2} = 10 \text{ mA}$$

Back to the first formula: $U_{R_1} = I_{\text{total}} \cdot R_1$

Exercise E1 Resistance of a Wire by Resistivity
(written test, approx. 6 % of a 60-minute written test, WS2022)

Question: A heating element made of nichrome wire with a diameter of $d = 0.5 \text{ mm}$ is used for heating. The power dissipation (= heat flow) of $P = 40 \text{ W}$ is necessary. Calculate the current I and the resistance R of the heating element.

Solution:

$$P = U \cdot I = R \cdot I^2 \quad \Rightarrow \quad I = \sqrt{\frac{P}{R}}$$

Solution:

$$P = U \cdot I = R \cdot I^2 \quad \Rightarrow \quad I = \sqrt{\frac{P}{R}}$$

$$\sqrt{\frac{P}{R}} = \sqrt{\frac{40 \text{ W}}{0.33 \cdot \Omega}} \quad \text{align*}$$

$$\begin{aligned} R &= \rho \cdot l \cdot \frac{1}{A} \quad \& \quad | \quad \text{with } A = r^2 \cdot \pi = \\ &= \frac{1}{4} \cdot d^2 \cdot \pi \quad \& \quad R = \rho \cdot l \cdot \frac{4 \cdot l}{d^2 \cdot \pi} \quad \& \quad R = \\ &= 1.10 \cdot 10^{-6} \cdot \Omega \cdot \text{m} \cdot \frac{4 \cdot 3 \cdot \text{m}}{(3.57 \cdot 10^{-3} \cdot \text{m})^2 \cdot \pi} \quad \& \quad \end{aligned}$$

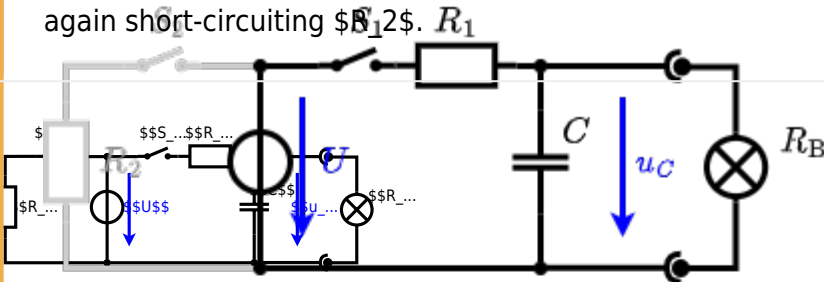
Exercise E7 Charging Capacitors
 (written test, approx. 16 % of a 60-minute written test, WS2022)

The circuit (with the light bulb) is a series of R_1 and R_2 and a capacitor C as indicated in Figure 1. The switch S_1 is open. The voltage across the capacitor is again 0 V at the moment $t_0 = 0 \text{ s}$ when the switch S_1 is closed. Calculate the voltage $u_c(t_2)$ across the capacitor at $t_2 = 1 \text{ ms}$ after closing the switch.

Solution
 Hint: To solve this, first create an equivalent linear voltage source from U , R_1 , and R_2 .

Solution
 The ideal voltage source U is in series with R_1 and R_2 . The voltage u_c is independent of this series combination.

On an alternative view, one can try to create an equivalent linear voltage source again. Then, the internal resistance is given by substituting the ideal voltage source is again short-circuiting S_1 .

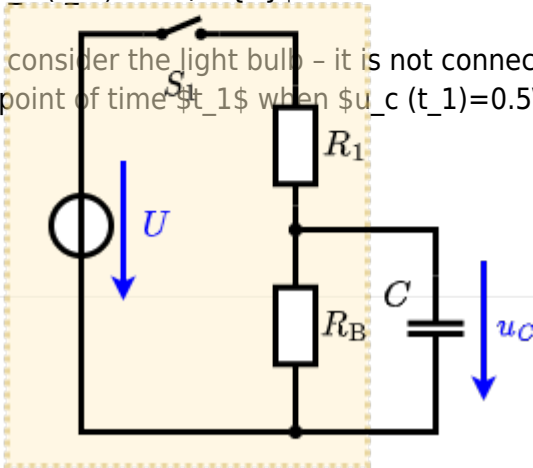


The circuit contains a voltage source $U = 12 \text{ V}$, a switch S_1 , a resistor of $R_1 = 20 \Omega$ and a capacitor of $C = 100 \mu\text{F}$.

The switch S_2 to an additional consumer R_2 will be considered to be open for the first tasks. At the moment $t_0 = 0 \text{ s}$ the switch S_1 is closed, the voltage across the capacitor is $u_c(t_0) = 0 \text{ V}$.

... First do not consider the light bulb - it is not connected to the RC circuit. Calculate the point of time t_1 when $u_c(t_1) = 0.5 \cdot U$.

Solution



An equivalent linear voltage source can be given with U_s , R_1 , and R_B as seen in yellow.

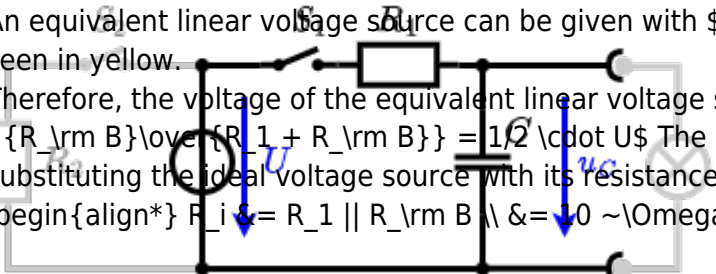
Therefore, the voltage of the equivalent linear voltage source is: $U_s = U \cdot \frac{R_B}{R_1 + R_B} = \frac{1}{2} \cdot U$ The internal resistance is given by substituting the ideal voltage source with its resistance ($R = 0 \Omega$, short-circuit).

$$R_i = R_1 \parallel R_B = 10 \Omega$$

$$u_c(t) = U_s \cdot (1 - e^{-t/(R_i \cdot C)}) = \frac{1}{2} \cdot U \cdot (1 - e^{-t/(10 \Omega \cdot 100 \mu F)})$$

The following formula describes the time course of $u_c(t)$ which has to be $u_c(t_1) = 0.5 \cdot U$:

$$u_c(t) = U \cdot (1 - e^{-t/\tau}) = 0.5 \cdot U$$
 It has to be rearranged to $(1 - e^{-t/\tau}) = 0.5 \implies e^{-t/\tau} = 0.5 \implies t/\tau = \ln(0.5) \implies t = \tau \cdot \ln(0.5) = R_1 \cdot C \cdot \ln(0.5)$



Exercise E3 Pure Resistor Network Simplification (written test, approx. 13 % of a 60-minute written test, WS2022)

The following shall be solved at 0V and $R_1 = R_2 = R_3 = 10 \Omega$ and the voltage $U = 10V$ is given. R_B .

Solution

$$R_{\text{eq}} = 132.8 \Omega$$

Now a wye-delta transformation is necessary.



Since $R_2=R_3$ and based on the equations for the transformation, the transformed R_Y is given as:

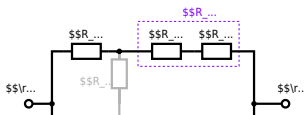
$$R_Y = \frac{R_2 \cdot R_2}{R_2 + R_2 + R_2} = \frac{(100 \Omega)^2}{3 \cdot 100 \Omega} = \frac{1}{3} \cdot 100 \Omega = 33.33 \Omega$$

The equivalent resistor is given by a parallel configuration of resistors in series:

$$R_{\text{eq}} = R_Y + (R_Y + R_1 + R_1) \parallel (R_Y + R_2) \parallel R_{\text{eq}} = 33.33 \Omega + (33.33 \Omega + 400 \Omega) \parallel (33.33 \Omega + 100 \Omega)$$

1. The switch shall now be open. Calculate the equivalent resistance R_{eq} between A and B .

Solution



The equivalent resistor is given by a parallel configuration of resistors in series:

$$R_{\text{eq}} = (R_2 + R_1 + R_{-1}) \parallel (R_2 + R_2) \parallel R_{\text{eq}} = (100 \Omega + 200 \Omega + 200 \Omega) \parallel (100 \Omega + 100 \Omega) \parallel R_{\text{eq}} = \{500 \Omega \parallel (200 \Omega) \parallel R_{\text{eq}} = \{500 \Omega \cdot 200 \Omega \over 500 \Omega + 200 \Omega\} \parallel$$

**Exercise E6 Equivalent linear Source
(written test, approx. 14 % of a 60-minute written test, WS2022)**

The circuit in the following has to be simplified.
Result

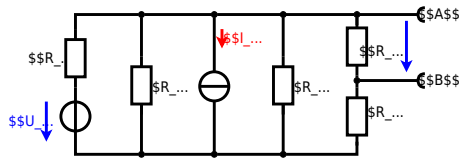
$$U_{\text{s}} = U_{\text{AB}} = 4.5 \text{ V} \quad R_{\text{i}} = R_{\text{AB}} = 6 \Omega$$



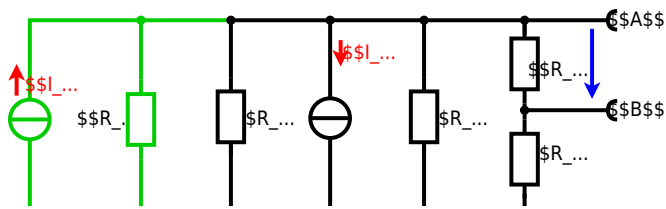
Calculated the internal resistance R_{int} and the source voltage U_{oc} of an equivalent linear voltage source on the connectors A and B . $\begin{aligned} R_1 &= 5.0 \text{ } \Omega, & U_2 &= 6.0 \text{ V}, & R_3 &= 10 \text{ } \Omega, & I_4 &= 4.2 \text{ A}, & R_5 &= 10 \text{ } \Omega, & R_6 &= 7.5 \text{ } \Omega, & R_7 &= 15 \text{ } \Omega \end{aligned}$ Use equivalent sources in order to simplify the circuit!

Solution

The best thing is to re-think the wiring like rubber bands and adjust them:



The linear voltage source of U_2 and R_1 can be transformed into a current source $I_2 = \frac{U_2}{R_1}$ and R_1 :



Now a lot of them can be combined. The resistors R_1 , R_3 , R_5 are in parallel, like also I_2 and I_4 :

$$R_{135} = R_1 || R_3 || R_5$$

$$I_{24} = I_2 - I_4$$

The resulting circuit can again be transformed:



Here, the U_{24} is calculated by I_{24} as the following:

$$U_{24} = I_{24} \cdot R_{635}$$

$$U_{AB} = U_{24} \cdot \left(\frac{R_7}{R_6 + R_7 + R_1 || R_3 || R_5} \right) - I_4 \cdot (R_1 || R_3 || R_5)$$

On the right side of the last circuit, there is a voltage divider given by R_{135} , R_6 , and R_7 .

Therefore the voltage between A and B is given as:

$$U_{AB} = U_{24} \cdot \left(\frac{R_7}{R_6 + R_7 + R_1 || R_3 || R_5} \right) - I_4 \cdot (R_1 || R_3 || R_5)$$

For the internal resistance R_i the ideal voltage source is substituted by its resistance ($=0 \Omega$, so a short-circuit):

$$R_{AB} = R_7 || (R_6 + R_1 || R_3 || R_5)$$

with $R_1 || R_3 || R_5 = 5 \Omega || 10 \Omega || 10 \Omega = 5 \Omega || 5 \Omega = 2.5 \Omega$:

$$U_{AB} = \left(\frac{6.0 \text{ V}}{5.0 \Omega} \right) - 4.2 \text{ A} \cdot \left(\frac{15 \Omega \cdot 2.5 \Omega}{7.5 \Omega + 15 \Omega + 2.5 \Omega} \right)$$

$$R_{AB} = 15 \Omega || (7.5 \Omega + 2.5 \Omega)$$

Exercise E2 Temperature-dependent Resistance (written test, approx. 6 % of a 60-minute written test, WS2022)

2. A refrigerator is explained with the effect of resistance on refrigeration system. The circuit has a resistance of 10Ω at 25°C and 25Ω at 0°C . Your answer.

Its temperature coefficients are: $\alpha = 0.01 \text{ K}^{-1}$ and $\beta = 71 \cdot 10^{-6} \text{ K}^{-2}$

Result The temperature inside the refrigeration system can reach down to -40°C .

$$R = 6.5 \text{ k}\Omega$$

Resistance of the resistor R is $6.5 \text{ k}\Omega$ at 25°C and 25Ω at 0°C . Therefore, a solution is to use a heat pump to heat up the refrigeration system.

Therefore, with constant U and increasing R the power decreases. Ten times more resistance decreases the heat flow to one-tenth.

$$R = R_0 \cdot (1 + \alpha \cdot \Delta T + \beta \cdot \Delta T^2)$$

$$\Delta T = T_{\text{end}} - T_{\text{start}}$$

$$R = 10 \text{ k}\Omega \cdot \left(1 + 0.01 \text{ K}^{-1} \cdot (-40^\circ\text{C} - 25^\circ\text{C}) + 71 \cdot 10^{-6} \text{ K}^{-2} \cdot (-40^\circ\text{C} - 25^\circ\text{C})^2 \right)$$

Exercise E10 Analyzing complex Impedances (written test, approx. 14 % of a 60-minute written test, WS2022)

1. Calculate the complex impedance Z of the circuit shown in the figure. The voltage $u(t) = 3.0 \cdot \sin(2\pi \cdot 15 \cdot t)$ V and the current $i(t) = 0.24 \cdot \sin(2\pi \cdot 15 \cdot t - \varphi)$ A shall be given.

After analysis, the full complex impedance Z shall be extracted and the magnitude $|Z|$ and phase φ shall be given.

Solution
.. Calculate the physical values of the two components.
Solution $R = 10 \Omega$ and $X_L = 2\pi \cdot 15 \cdot 0.2 = 1.88 \Omega$

Solution

$$\underline{I} = \frac{\underline{U}}{\underline{Z}} \quad \text{with } \underline{U} = 3 \angle 0^\circ \text{ V and } \underline{I} = 0.24 \angle -\varphi \text{ A}$$

The voltage $u(t) = 3.0 \cdot \sin(2\pi \cdot 15 \cdot t)$ V and the current $i(t) = 0.24 \cdot \sin(2\pi \cdot 15 \cdot t - \varphi)$ A shall be given. The resulting impedance Z shall be calculated as $Z = \frac{U}{I} = \frac{3 \angle 0^\circ}{0.24 \angle -\varphi} = 12.5 \angle \varphi \Omega$

Therefore, the component R shall be calculated as $R = |Z| \cdot \cos(\varphi) = 12.5 \cdot \cos(30^\circ) = 10.8 \Omega$

With the complex part $X_L = 2\pi \cdot 15 \cdot L = 1.88 \Omega$ and $R = 10.8 \Omega$ the phase φ shall be calculated as $\varphi = \arctan\left(\frac{X_L}{R}\right) = \arctan\left(\frac{1.88}{10.8}\right) = 9.9^\circ$

The phase φ shall be calculated as $\varphi = \arctan\left(\frac{X_L}{R}\right) = \arctan\left(\frac{1.88}{10.8}\right) = 9.9^\circ$

Exercise E14 Complex Impedance Circuit (written test, approx. 15 % of a 60-minute written test, WS2022)

1. Calculate the complex impedance Z of the circuit shown in the figure. The voltage $u(t) = 3.0 \cdot \sin(2\pi \cdot 15 \cdot t)$ V and the current $i(t) = 0.24 \cdot \sin(2\pi \cdot 15 \cdot t - \varphi)$ A shall be given.

After analysis, the full complex impedance Z shall be extracted and the magnitude $|Z|$ and phase φ shall be given.

Solution
Result
.. Draw the circuit diagram of the given circuit.
Solution $Z = 10.8 \Omega$ and $X_L = 1.88 \Omega$

With the complex part $X_L = 2\pi \cdot 15 \cdot L = 1.88 \Omega$ and $R = 10.8 \Omega$ the phase φ shall be calculated as $\varphi = \arctan\left(\frac{X_L}{R}\right) = \arctan\left(\frac{1.88}{10.8}\right) = 9.9^\circ$

The phase φ shall be calculated as $\varphi = \arctan\left(\frac{X_L}{R}\right) = \arctan\left(\frac{1.88}{10.8}\right) = 9.9^\circ$



Exercise E12 Impedances at different Frequencies
(written test, approx. 18 % of a 60-minute written test, WS2022)

2. A series circuit consists of a resistor with a resistance of $R_1 = 1.00 \text{ k}\Omega$, a capacitor with a capacitance of $C_1 = 40 \text{ nF}$, and an inductor with an inductance of $L_1 = 4.7 \text{ }\mu\text{H}$. The voltage across the resistor is $U_{R_1} = 10 \text{ V}$. Calculate the absolute value of the impedance of the circuit at $f = 4 \text{ MHz}$.

Solution

$$R_1 = 1.00 \text{ k}\Omega$$

$$R_2 = 10.0 \text{ }\Omega$$

A series circuit means that the current is constant on every component.
 The equivalent impedance for R_1 and L_1 combined is given by $Z_{RL} = R_1 + j\omega L_1$.
 The impedance of the capacitor is $Z_C = -j/\omega C_1$.
 The total impedance is $Z = R_1 + j\omega L_1 - j/\omega C_1$.
 At $f = 4 \text{ MHz}$, $\omega = 2\pi \cdot 4 \cdot 10^6 \text{ rad/s}$.

$$Z = 1000 + j(2\pi \cdot 4 \cdot 10^6 \cdot 4.7 \cdot 10^{-6}) - j(1/(2\pi \cdot 4 \cdot 10^6 \cdot 40 \cdot 10^{-9}))$$

$$Z = 1000 + j111.6 - j3.98$$

$$Z = 1000 - j2.87 \text{ }\Omega$$
 The absolute value of the impedance is $|Z| = \sqrt{1000^2 + (-2.87)^2} \approx 1000 \text{ }\Omega$.

Exercise E1 Resistance of a Wire by Resistivity
(written test, approx. 6 % of a 60-minute written test, WS2022)

2. A heating element made of nichrome wire with a diameter of $d = 0.5 \text{ mm}$ and a length of $l = 3 \text{ m}$ is used for heating. The power dissipation (= heat flow) of $P = 40 \text{ W}$ is necessary. Calculate the resistance R of the heating element.

Solution

$$P = U \cdot I = R \cdot I^2 \quad \rightarrow \quad I = \sqrt{P/R}$$

$$\sqrt{\frac{P}{R}} = \sqrt{\frac{40 \text{ W}}{0.33 \cdot \Omega}} \quad \text{align*}$$

$$\begin{aligned} R &= \rho \cdot l \cdot \frac{1}{A} \quad \& \quad | \quad \text{with } A = r^2 \cdot \pi = \\ &= \frac{1}{4} d^2 \cdot \pi \quad \& \quad R = \rho \cdot l \cdot \frac{4 \cdot l}{d^2 \cdot \pi} \quad \& \quad R = \\ &= 1.10 \cdot 10^{-6} \cdot \Omega \cdot \text{m} \cdot \frac{4 \cdot 3 \cdot \text{m}}{(3.57 \cdot 10^{-3} \cdot \text{m})^2 \cdot \pi} \quad \& \quad \end{aligned}$$

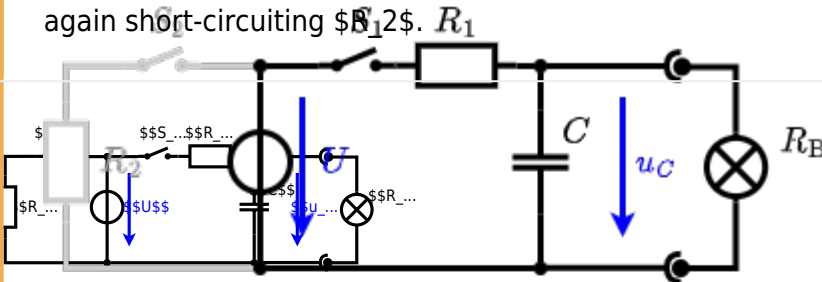
Exercise E8 Charging Capacitors
(written test, approx. 16 % of a 60-minute written test, WS2022)

The circuit (with the light bulb) also consists of a DC voltage source $U = 12 \text{ V}$, a resistor $R_1 = 20 \text{ }\Omega$, a capacitor $C = 100 \text{ }\mu\text{F}$, and a light bulb $R_B = 5 \text{ }\Omega$. The switch S_1 is closed, the voltage across the capacitor is again 0 V at the moment $t_0 = 0 \text{ s}$ when the switch S_2 is closed. Calculate the voltage $u_c(t_2)$ across the capacitor at $t_2 = 1 \text{ ms}$ after closing the switch.

Solution
 Hint: To solve this, first create an equivalent linear voltage source from U , R_1 , and R_B .

Solution
 Hint: To solve this, first create an equivalent linear voltage source from U , R_1 , and R_B . The internal voltage source U_{int} is $U_{int} = U \cdot \frac{R_B}{R_1 + R_B} = 12 \text{ V} \cdot \frac{5 \text{ }\Omega}{20 \text{ }\Omega + 5 \text{ }\Omega} = 2 \text{ V}$ and the internal resistance $R_{int} = R_1 \parallel R_B = 4 \text{ }\Omega$.

On an alternative view, one can try to create an equivalent linear voltage source again. Then, the internal resistance is given by substituting the ideal voltage source is again short-circuiting R_B .

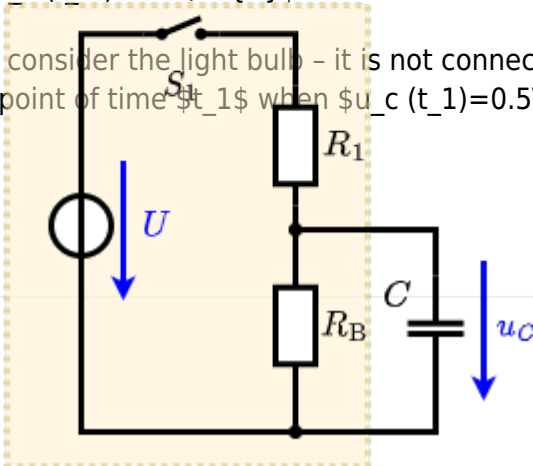


The circuit contains a voltage source $U = 12 \text{ V}$, a switch S_1 , a resistor of $R_1 = 20 \text{ }\Omega$ and a capacitor of $C = 100 \text{ }\mu\text{F}$.

The switch S_2 to an additional consumer R_2 will be considered to be open for the first tasks. At the moment $t_0 = 0 \text{ s}$ the switch S_1 is closed, the voltage across the capacitor is $u_c(t_0) = 0 \text{ V}$.

... First do not consider the light bulb - it is not connected to the RC circuit. Calculate the point of time t_1 when $u_c(t_1) = 0.5 \cdot U$.

Solution



An equivalent linear voltage source can be given with U_s , R_1 , and R_B as seen in yellow.

Therefore, the voltage of the equivalent linear voltage source is: $U_s = U \cdot \frac{R_B}{R_1 + R_B} = \frac{1}{2} \cdot U$ The internal resistance is given by substituting the ideal voltage source with its resistance ($R_1 = 0 \Omega$, short-circuit).

$$R_i = R_1 \parallel R_B = 10 \Omega$$

$$u_c(t) = U_s \cdot (1 - e^{-t/(R_i \cdot C)}) = \frac{1}{2} \cdot U \cdot (1 - e^{-t/(10 \cdot 100 \mu F)})$$

The following formula describes the time course of $u_c(t)$ which has to be $u_c(t_1) = 0.5 \cdot U$:

$$u_c(t) = U \cdot (1 - e^{-t/\tau}) = 0.5 \cdot U$$
 It has to be rearranged to $(1 - e^{-t/\tau}) = 0.5 \implies e^{-t/\tau} = 0.5 \implies t/\tau = \ln(0.5) \implies t = \tau \cdot \ln(0.5) = R_1 \cdot C \cdot \ln(0.5)$



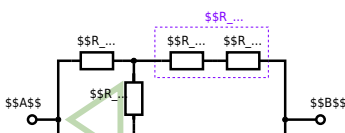
Exercise E4 Pure Resistor Network Simplification (written test, approx. 13 % of a 60-minute written test, WS2022)

The following shall be solved at 0.10 A, $R_1 = R_2 = R_3 = 1.5 \Omega$ and the voltage $U = 10 \text{ V}$ is given. R_B .

Solution

$$R_{\text{eq}} = 132.8 \Omega$$

Now a wye-delta transformation is necessary.



Since $R_2=R_3$ and based on the equations for the transformation, the transformed R_Y is given as:

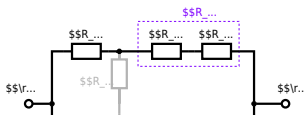
$$R_Y = \frac{R_2 \cdot R_2}{R_2 + R_2 + R_2} = \frac{(100 \Omega)^2}{3 \cdot 100 \Omega} = \frac{1}{3} \cdot 100 \Omega = 33.33 \Omega$$

The equivalent resistor is given by a parallel configuration of resistors in series:

$$R_{\text{eq}} = R_Y + (R_Y + R_1 + R_1) \parallel (R_Y + R_2) \parallel R_{\text{eq}} = 33.33 \Omega + (33.33 \Omega + 400 \Omega) \parallel (33.33 \Omega + 100 \Omega)$$

1. The switch shall now be open. Calculate the equivalent resistance R_{eq} between A and B .

Solution



The equivalent resistor is given by a parallel configuration of resistors in series:

$$R_{\text{eq}} = (R_2 + R_1 + R_1) \parallel (R_2 + R_2) \parallel R_{\text{eq}} = (100 \sim \Omega + 200 \sim \Omega + 200 \sim \Omega) \parallel (100 \sim \Omega + 100 \sim \Omega) \parallel R_{\text{eq}} = \{500 \sim \Omega \cdot 200 \sim \Omega\} \over {500 \sim \Omega + 200 \sim \Omega}$$

From:

<https://first.mexle.te.hs-heilbronn.de/> - MEXLE Wiki

Permanent link:

https://first.mexle.te.hs-heilbronn.de/electrical_engineering_1/ws2022_exam?rev=1680241578

Last update: 2023/03/31 07:46

