

6 Sequential Logic

Student Group

First Name	Surname	Matrikel Nr.

Table of Contents

- 6. Sequential Logic 2
- 6.1 State Diagram, State Transition Diagram 2
- 6.1.1 Motivation 2
- 6.1.2 Simple logic Example 3

6. Sequential Logic

“I Know What You Did Last Cycle”

6.1 State Diagram, State Transition Diagram

6.1.1 Motivation

The diagrams of different states are well known from physics for example the state diagram (or better: phase diagram) of water, where its three states are: solid ice, liquid water and gaseous steam. The possible state transitions are due to temperature increase or decrease.

In [figure 9](#) image (1) the states of water are shown on the temperature axis. When only the state transitions are relevant, the states are simplified to a circle, showing the state name and behaviour. The transitions are depicted as arrows, where the needed condition is written onto (See [figure 9](#) image (2)). This diagram is called **state transition diagram**.

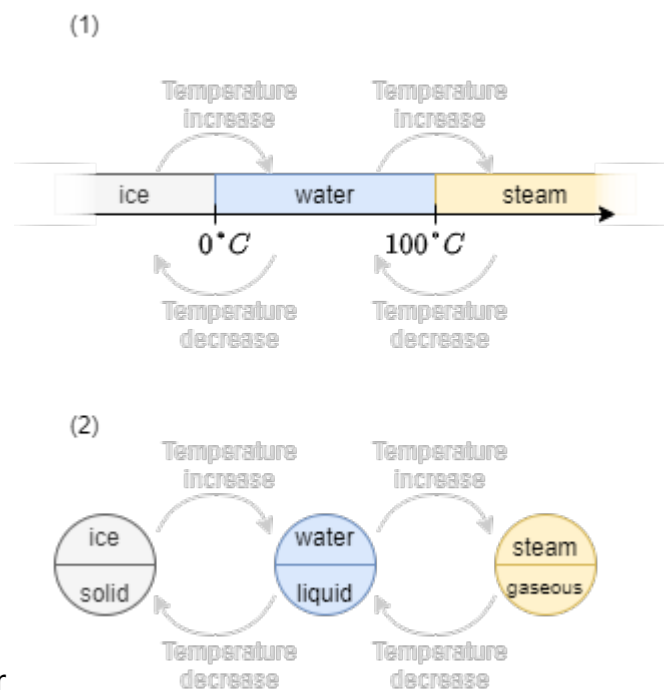


Fig. 9: States of Water

For matter not only the dimension “temperature” is important, but also the “pressure”. The full phase diagram is shown in [figure 10](#) image (1). By this, another variable is available and more transitions. These can be drawn into the state transition diagram ([figure 10](#) image (2)).

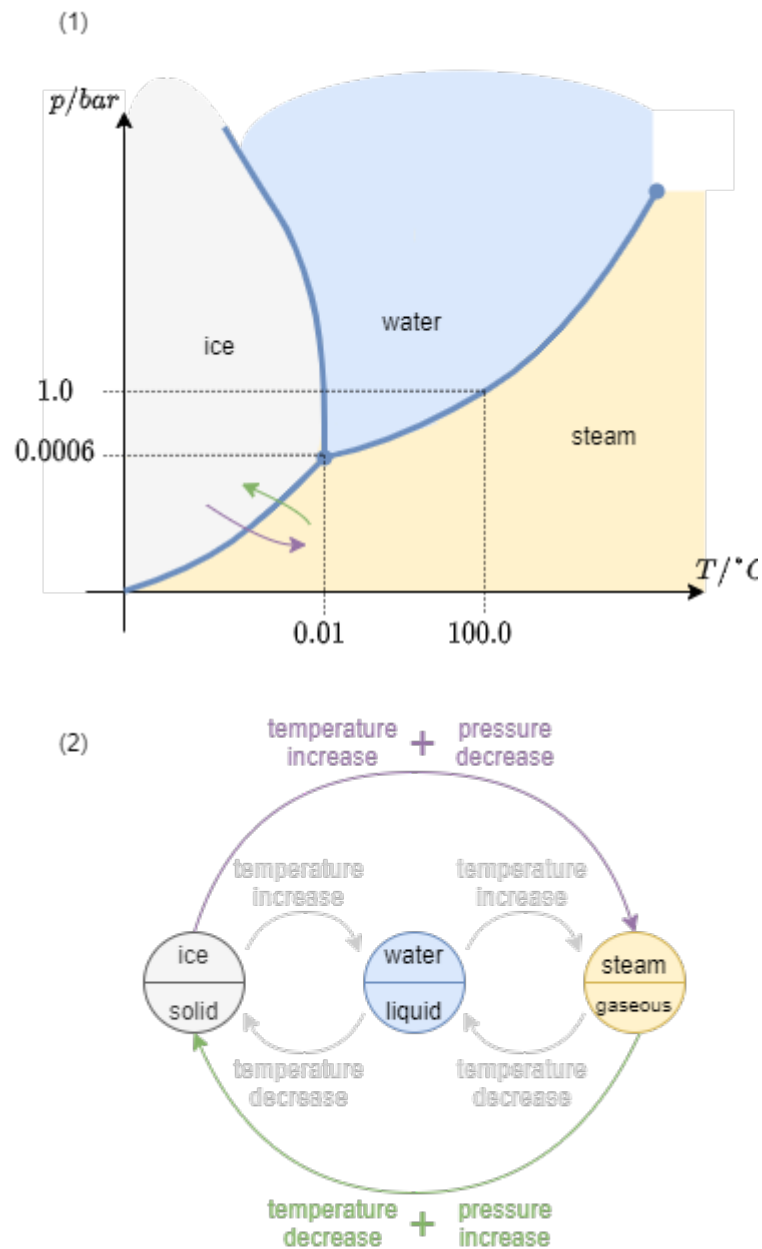


Fig. 10: States of Water

6.1.2 Simple logic Example

In German, often one has to pay for entering the toilet. An example of such an entrance control system is shown in figure 11. At this (artificial) example, one can pay either 50ct or 1€. Once paid, the turnstile will release and one can enter. Once the turnstile was pushed the entrance is closed again.



Fig. 11: Entrance Control for Toilets

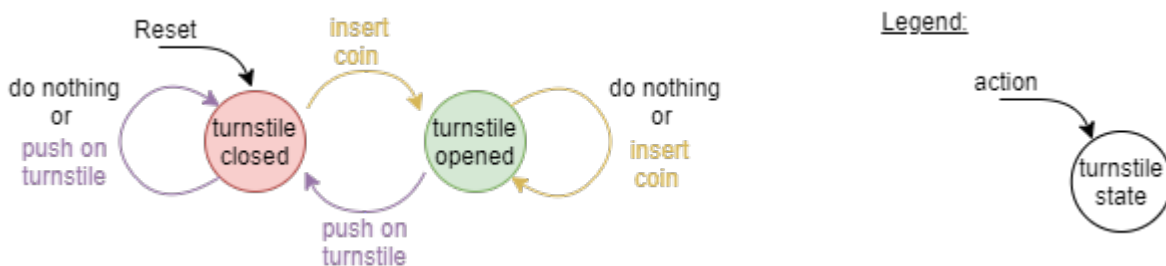
The figure 12 the state transition diagram is drawn.

- The two states are that (1) the turnstile is opened and one is able to go through and (2) the turnstile is closed and one cannot enter anymore.
- The transitions are given by the done actions: one can either insert a coin or push on the turnstile.

Important here are some additional considerations:

- For the state transition diagram one has to **look for all possible transitions**. So, also pushing a closed turnstile or inserting more coins have to taken into account.
- A state transition diagram is not complete without a **legend** and without an **beginning/reset point**. The reset point is given by an arrow with “reset” written onto it

Fig. 12: State Transition Diagramm of the Entrance Control for Toilets



Out of this state transition diagram one can create a table-like representation, see figure 13.

Fig. 13: State Transition Diagramm of the Entrance Control for Toilets

Toilet Entrance Control			
current state	input / event	next state	output / action
turnstile closed	push turnstile	turnstile closed	disallow entrance
turnstile closed	insert coin	turnstile opened	allow entrance
turnstile opened	push turnstile	turnstile closed	disallow entrance
turnstile opened	insert coin	turnstile opened	allow entrance

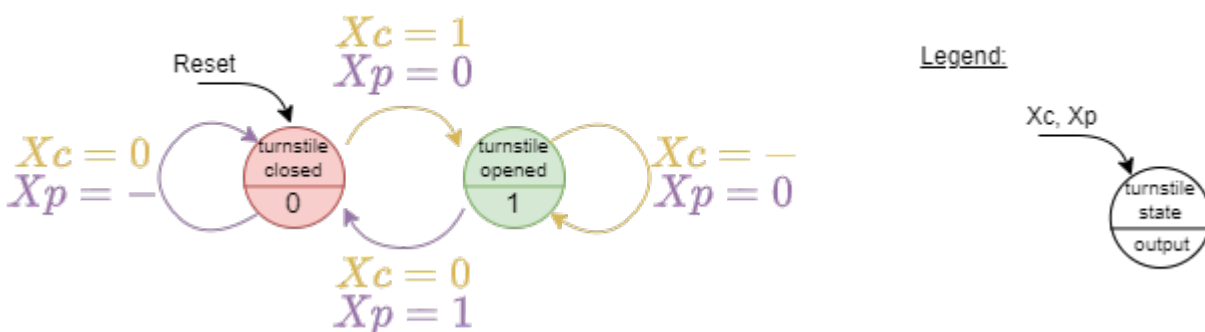
the inputs, outputs and states have to be encoded into binary, in order to investigate this table a bit more. How the binary value is connected to the outputs does not matter. We will choose the following coding:

- Encoding of the states: turnstile closed \triangleq $Q=0$, turnstile opened \triangleq $Q=1$,
- Encoding of the inputs: no coin inserted \triangleq $X_c=0$, coin inserted \triangleq $X_c=1$, turnstile not pushed \triangleq $X_p=0$, turnstile pushed \triangleq $X_p=1$,
- Encoding of the outputs: disallow entrance \triangleq $Y=0$, allow entrance \triangleq $Y=1$,

This table is shown in [figure 1](#) and is called **state transition table**.

Fig. 1: State Transition Diagramm of the Entrance Control for Toilets

Toilet Entrance Control						
current state	$Z(n)$	X_c	X_p	next state	$Z(n + 1)$	Y
	0	0	-		0	0
	0	1	0		1	1
	1	0	1		0	0
	1	-	0		1	1



Interestingly, the logic circuit for this state transition table was already part of the course: it is the RS flip-flop! When looking deeper onto the table in [figure 1](#) one can substitute X_c with S (as in Set) and X_p with R (as in Reset) to directly get the truthtable of the RS flip flop.

Fig. ##: x

Fig. 5: x

From:

<https://first.mexle.te.hs-heilbronn.de/> - **MEXLE Wiki**

Permanent link:

https://first.mexle.te.hs-heilbronn.de/introduction_to_digital_systems/sequential_logic?rev=1637546992

Last update: **2021/11/22 03:09**

